



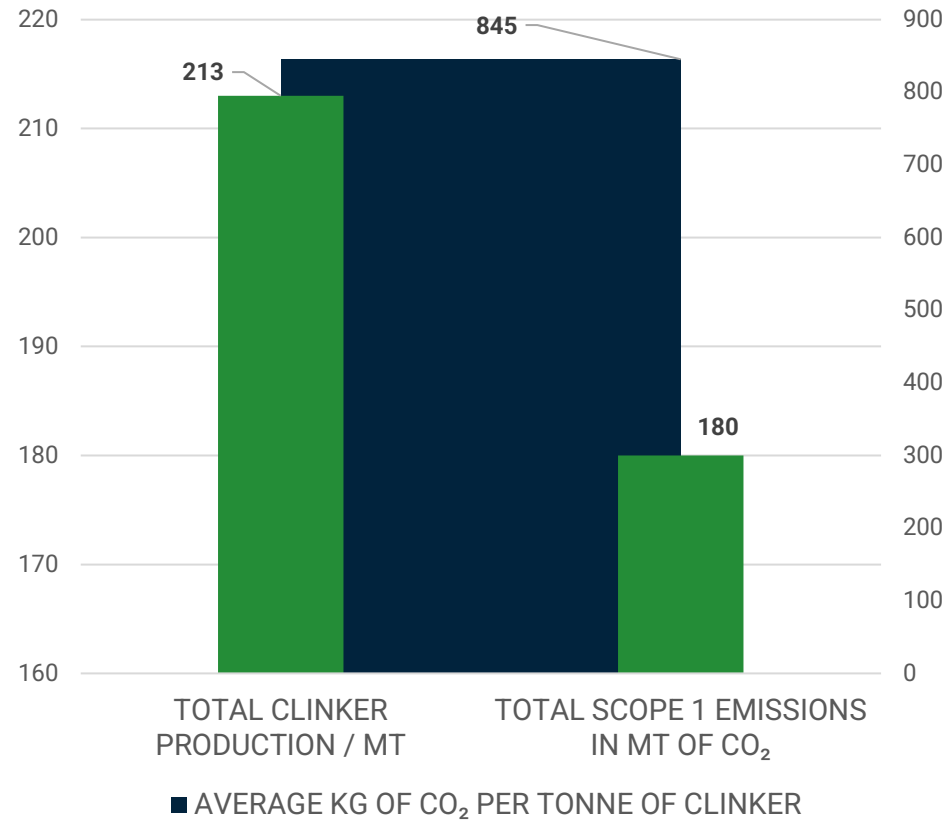
# 2021 Estimated Carbon Data Americas

ARGENTINA – BOLIVIA – BRAZIL – CANADA – CHILE – COLOMBIA – COSTA RICA  
– ECUADOR – GUATEMALA – MEXICO – PANAMA – PERU – UNITED STATES

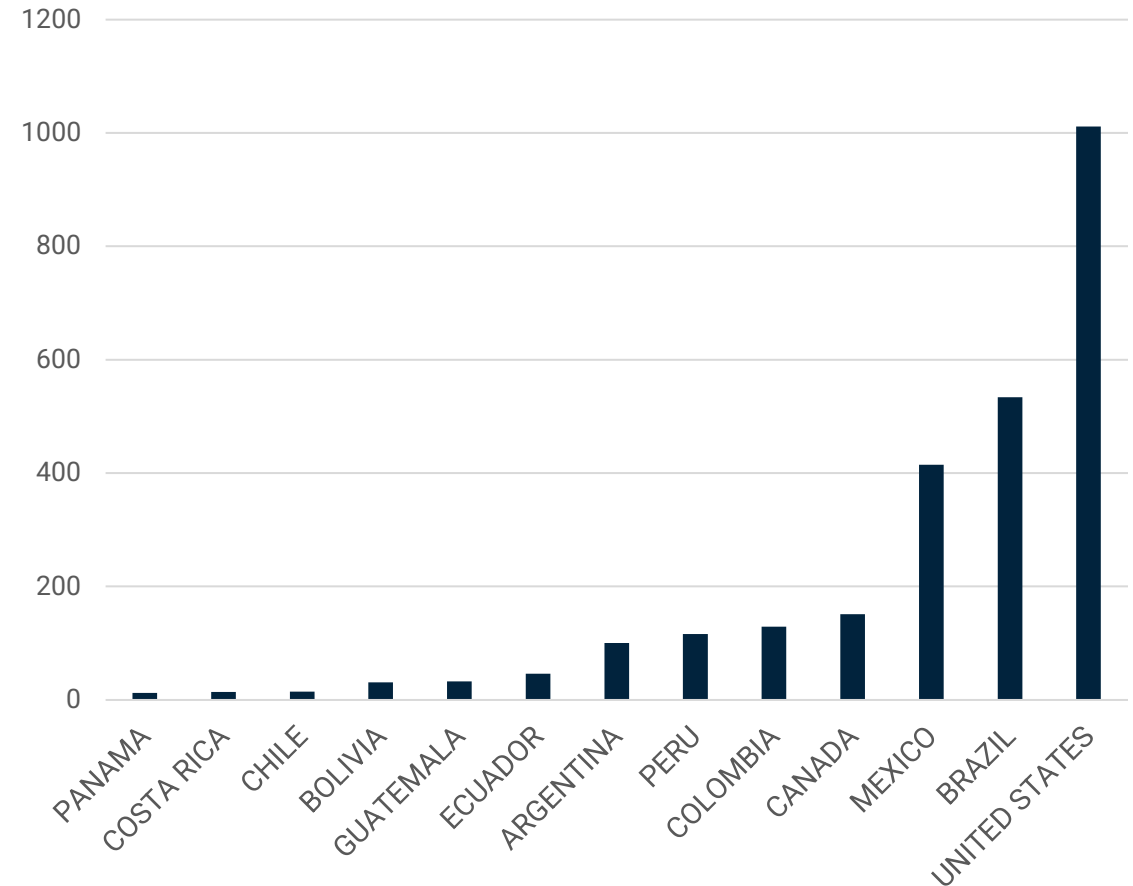


# Americas – carbon emissions

## AMERICAS - TOTAL FIGURES



## TOTAL SCOPE 1 EMISSIONS - ARGENTINA=100

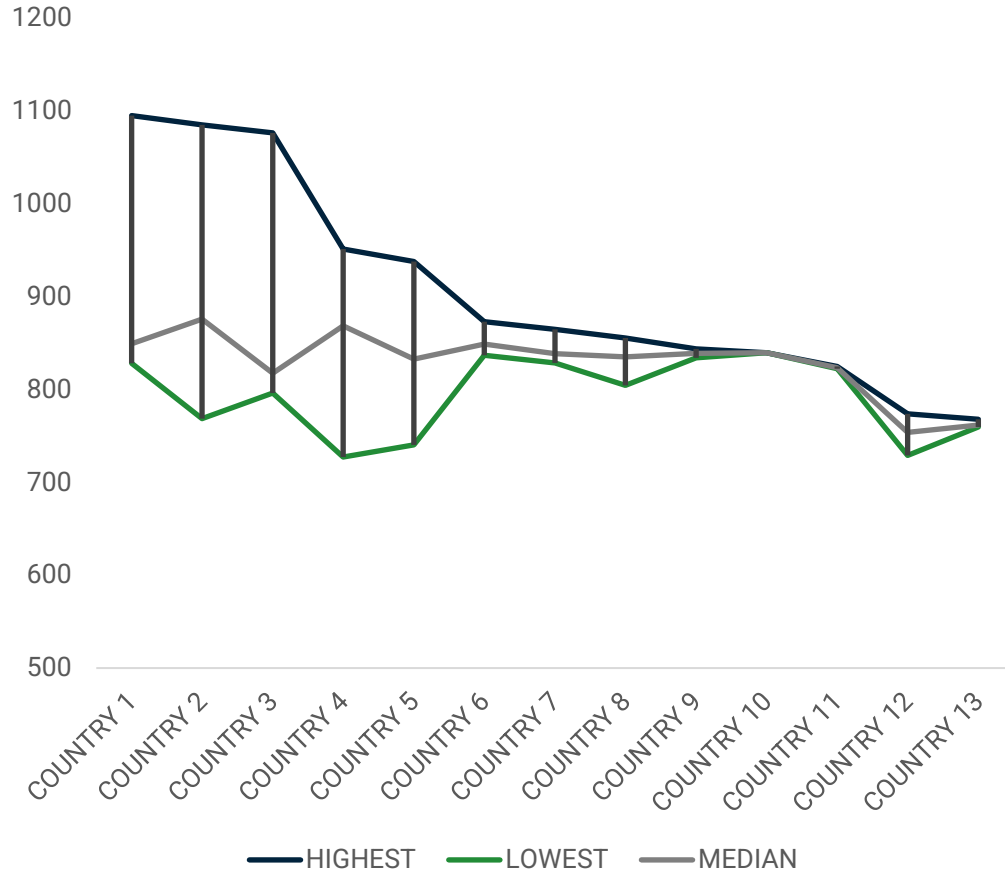


Americas has high average emissions per tonne of clinker compared to other regions. The region is dominated by the USA, Brazil, and Mexico, which together emit around 75% of the regional total.

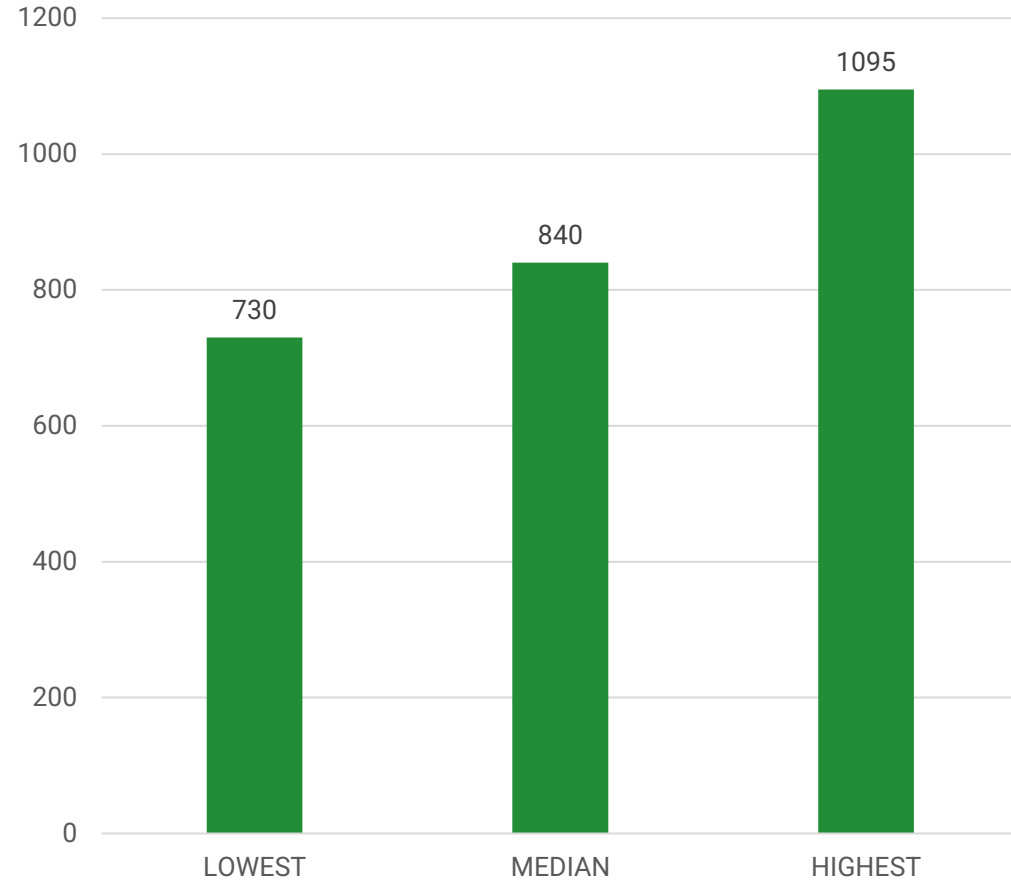
Contact us to unlock the data

# Americas – carbon emissions per tonne of clinker

KG OF CO<sub>2</sub> PER TONNE OF CLINKER PRODUCED



KG OF CO<sub>2</sub> PER TONNE OF CLINKER PRODUCED

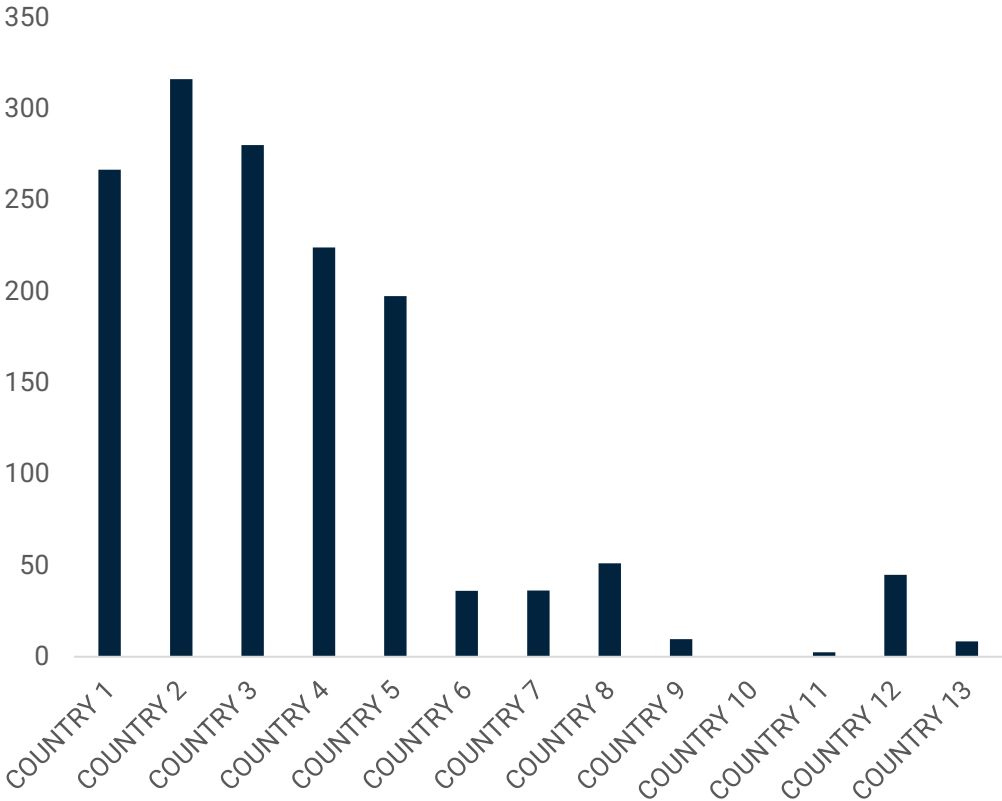


There is a mixed picture of the difference in emission between plants in the countries of the region. Five countries present a very wide variation between the lowest and highest emitting plants.

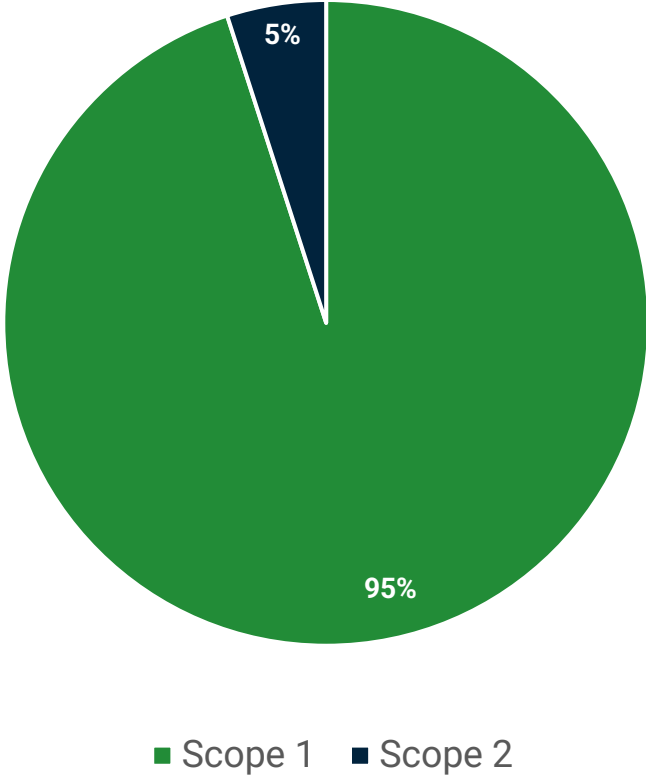
The regional plant profile presents a wide variation between the best and worst emitters.

# Americas – carbon emissions per tonne of clinker

### HIGHEST TO LOWEST VARIATION - KG OF CO<sub>2</sub> PER TONNE OF CLINKER PRODUCED



### AMERICAS - TOTAL EMISSIONS BY SCOPE



The widest variation in emissions between plants in the five top countries indicate a large difference between the best and worst emitters. These are significant differences of between 200 Kg and 300 Kg of CO<sub>2</sub> per tonne of clinker.

Scope 2 emissions are around 5% of total based on estimated cement productions and country specific electricity profile.

Contact us to unlock the data

HOSTED BY



KNOWLEDGE PARTNER



# THE GREEN CEMENT CONFERENCE

UNLOCKING  
DATA DRIVEN  
NET ZERO  
TRANSITION

10 - 12 July 2023 | Grand Hyatt Athens, Greece

[cembrgroup.com](http://cembrgroup.com) | [a3cement.com](http://a3cement.com)

INDUSTRY ADVISOR



Get in touch with our team to learn more:

**Myriam Planaki**

**[myriam@cembrgroup.com](mailto:myriam@cembrgroup.com)**